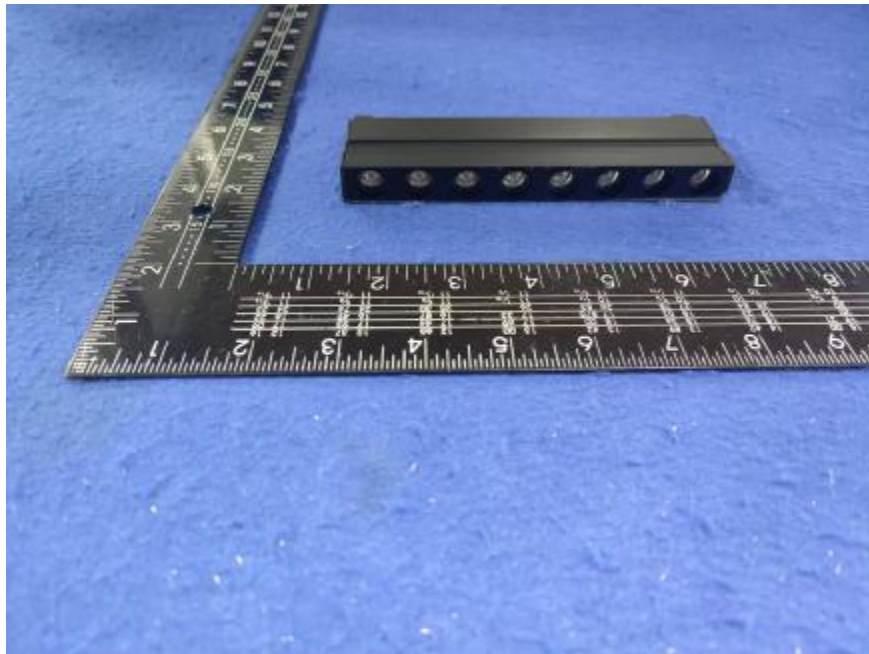


Luminaire Photograph



Light Output Ratio:	53.0%	
Luminaire Power:	8.543 W	
SHR Nominal:	0.50	Calculated using the TM5
SHR Maximum:	0.60	fine grid method.

C Range: 0 - 360DEG
C Interval: 30.0DEG
Test Speed: HIGH
Temperature: 25.3 °C
Operators: zoe
Test Date: 2024-12-10

γ Range: 0 - 180DEG
 γ Interval: 1.0DEG
Test System: EVERFINE GO-SPEX500_V1 SYSTEM V2.00.461
Humidity: 65.0%
Test Distance: 3.160m [K=1.0000]
Remarks: LAMP: NF2W757GRT-V4 Ra: 90
LENS: KY-XLZ148-36R
NOT DRIVER: 48V
30minutes warm-up

LUMINOUS INTENSITY DISTRIBUTION DIAGRAM

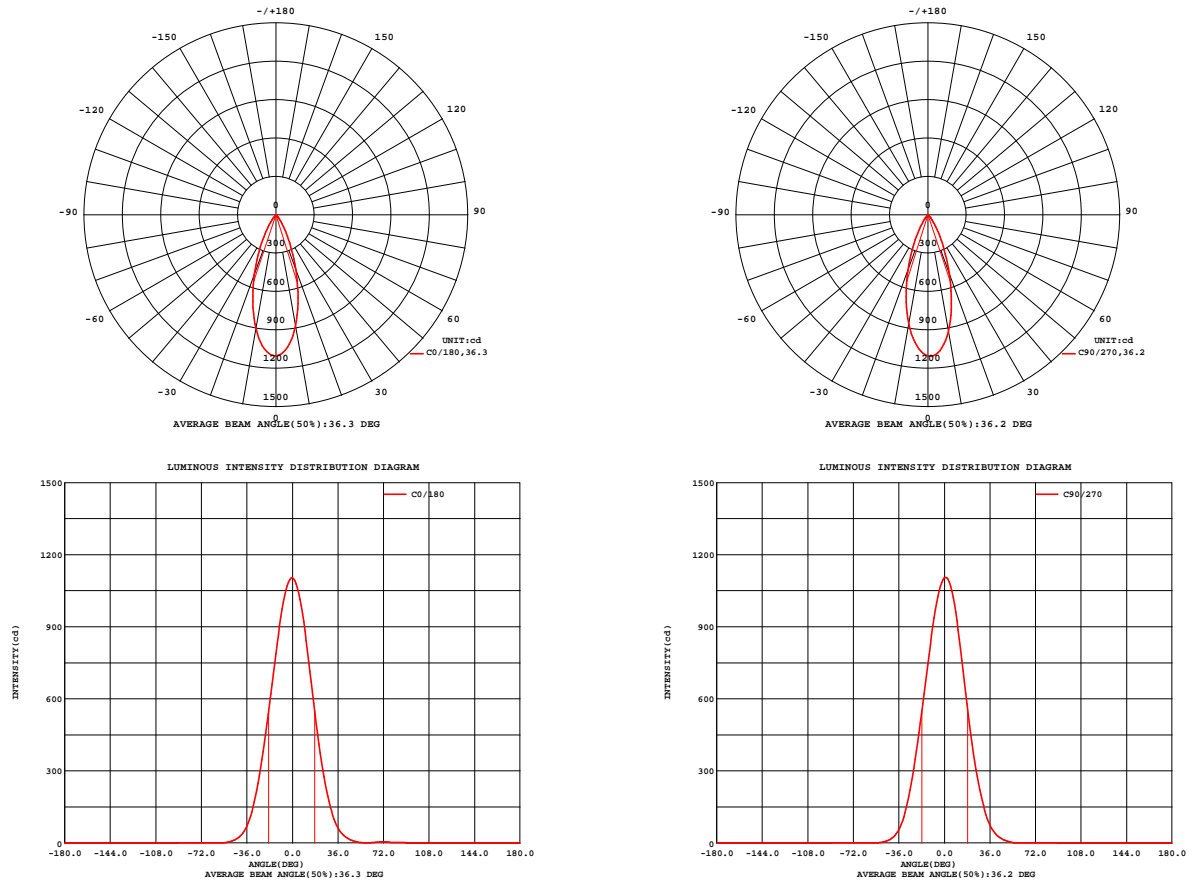


Fig. C0/C180

Fig. C90/C270

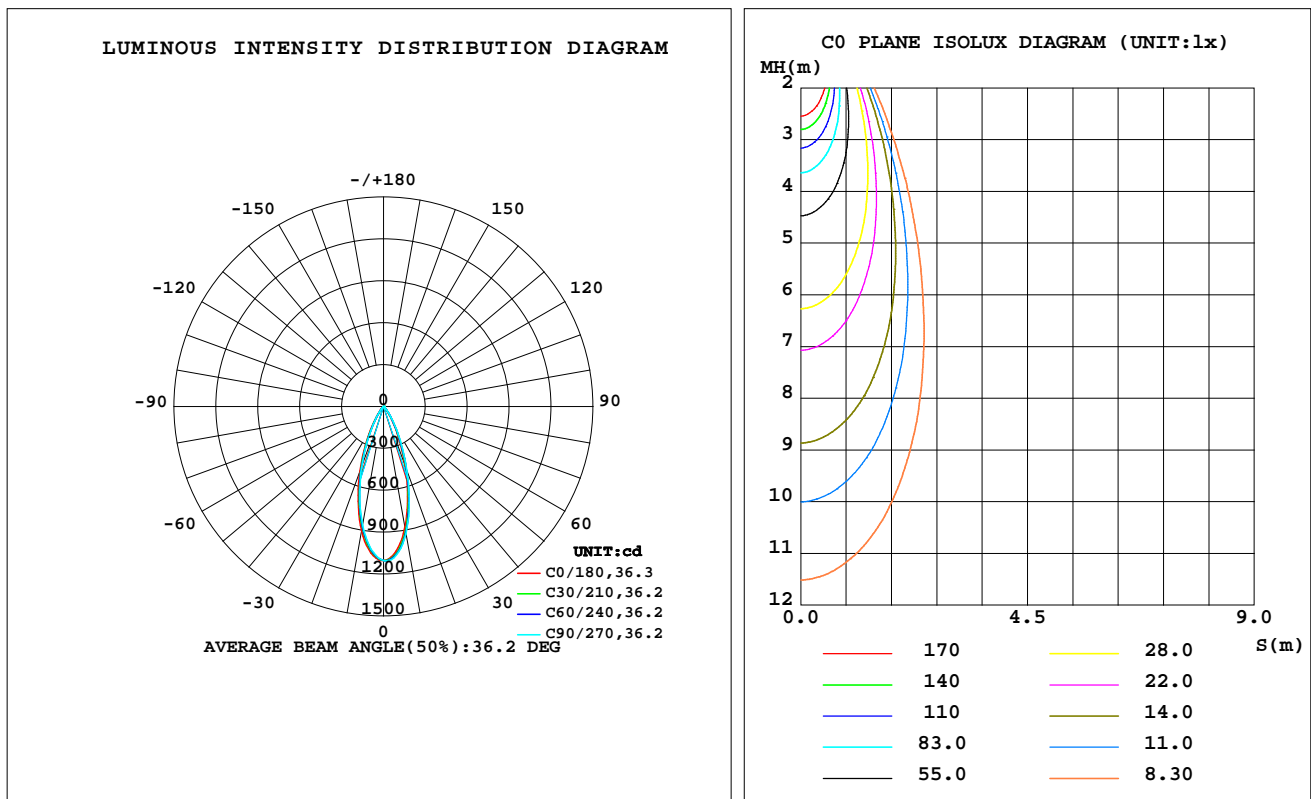
C Range: 0 - 360DEG
C Interval: 30.0DEG
Test Speed: HIGH
Temperature: 25.3 °C
Operators: zoe
Test Date: 2024-12-10

γ Range: 0 - 180DEG
γ Interval: 1.0DEG
Test System: EVERFINE GO-SPEX500_V1 SYSTEM V2.00.461
Humidity: 65.0%
Test Distance: 3.160m [K=1.0000]
Remarks: LAMP: NF2W757GRT-V4 Ra: 90
LENS: KY-XLZ148-36R
NOT DRIVER: 48V
30minutes warm-up

LUMINAIRE PHOTOMETRIC TEST REPORT

Test:U:47.997V I:0.1780A P:8.5435W PF:1.0000 Freq:49.99Hz Lamp Flux:913.52x1 lm		
NAME: OZ48-KA-8	TYPE:	WEIGHT:
SPEC.: 3000K	DIM.:	SERIAL No.: 2412101467
MFR.: RISE	SUR.: 0.001833m2	Shielding Angle:

DATA OF LAMP		PHOTOMETRIC DATA Eff: 56.72 lm/W			
MODEL	Nichia	I _{max} (cd)	1106	S/MH(C0/180)	0.60
NOMINAL POWER(W)	9	LOR(%)	53.0	S/MH(C90/270)	0.57
RATED VOLTAGE(V)	48	TOTAL FLUX(lm)	484.56	η UP,DN(C0-180)	0.0,27.4
NOMINAL FLUX(lm)	913.52	CIE CLASS	DIRECT	η UP,DN(C180-360)	0.0,25.7
LAMPS INSIDE	1	η up(%)	0.0	CIBSE SHR NOM	0.50
TEST VOLTAGE(V)	48	η down(%)	53.0	CIBSE SHR MAX	0.60



C Range: 0 - 360DEG
C Interval: 30.0DEG
Test Speed: HIGH
Temperature:25.3℃
Operators:zoe
Test Date:2024-12-10

γ Range: 0 - 180DEG
γ Interval: 1.0DEG
Test System:EVERFINE GO-SPEX500_V1 SYSTEM V2.00.461
Humidity:65.0%
Test Distance:3.160m [K=1.0000]
Remarks: LAMP:NF2W757GRT-V4 Ra:90
LENS:KY-XLZ148-36R
NOT DRIVER:48V
30minutes warm-up

ZONAL FLUX DIAGRAM

ZONAL FLUX DIAGRAM:

γ	C0	C45	C90	C135	C180	C225	C270	C315	γ	Φ zone	Φ total	%lum,lamp
10	882.8	912.0	925.7	917.1	905.3	878.1	865.6	871.1	0- 10	95.00	95.00	19.6,10.4
20	453.3	475.7	489.9	494.1	497.4	471.0	459.1	454.6	10- 20	188.1	283.1	58.4,31
30	150.0	169.0	175.9	173.4	170.8	152.8	146.9	145.7	20- 30	134.9	418.0	86.3,45.8
40	35.30	41.02	41.32	38.32	35.75	27.52	26.48	29.49	30- 40	51.29	469.3	96.8,51.4
50	5.610	7.123	7.207	5.776	4.513	2.477	2.335	3.512	40- 50	12.12	481.4	99.3,52.7
60	0.9715	0.5790	0.1237	0.1038	0.0742	0.0542	0.0487	0.5458	50- 60	1.278	482.7	99.6,52.8
70	4.383	1.607	0.0158	0.0175	0.0208	0.0157	0.0140	1.573	60- 70	0.5497	483.2	99.7,52.9
80	1.910	0.9562	0.0099	0.0127	0.0211	0.0110	0.0109	0.9535	70- 80	0.8946	484.1	99.9,53
90	0	0	0	0	0	0	0	0	80- 90	0.4548	484.6	100,53
100	0	0	0	0	0	0	0	0	90-100	0	484.6	100,53
110	0	0	0	0	0	0	0	0	100-110	0	484.6	100,53
120	0	0	0	0	0	0	0	0	110-120	0	484.6	100,53
130	0	0	0	0	0	0	0	0	120-130	0	484.6	100,53
140	0	0	0	0	0	0	0	0	130-140	0	484.6	100,53
150	0	0	0	0	0	0	0	0	140-150	0	484.6	100,53
160	0	0	0	0	0	0	0	0	150-160	0	484.6	100,53
170	0	0	0	0	0	0	0	0	160-170	0	484.6	100,53
180	0	0	0	0	0	0	0	0	170-180	0	484.6	100,53
DEG	LUMINOUS INTENSITY:cd									UNIT:lm		

C Range: 0 - 360DEG
C Interval: 30.0DEG
Test Speed: HIGH
Temperature:25.3℃
Operators:zoe
Test Date:2024-12-10

γ Range: 0 - 180DEG
 γ Interval: 1.0DEG
Test System:EVERFINE GO-SPEX500_V1 SYSTEM V2.00.461
Humidity:65.0%
Test Distance:3.160m [K=1.0000]
Remarks: LAMP:NF2W757GRT-V4 Ra:90
LENS:KY-XLZ148-36R
NOT DRIVER:48V
30minutes warm-up

LUMINANCE LIMITATION CURVES

Test:U:47.997V I:0.1780A P:8.5435W PF:1.0000 Freq:49.99Hz
Lamp Flux:913.52x1 lm

NAME: OZ48-KA-8

TYPE:

WEIGHT:

SPEC.: 3000K

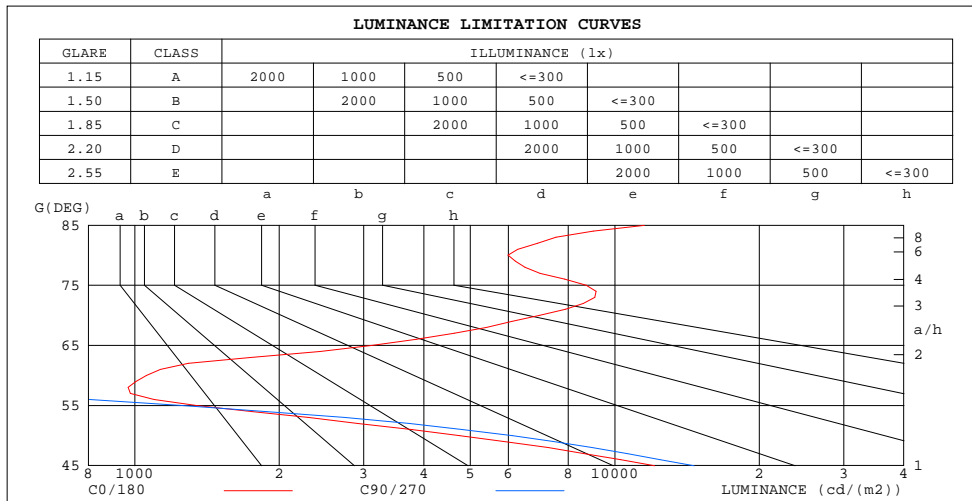
DIM.:

SERIAL No.: 2412101467

MFR.: RISE

SUR.: 0.001833m2

Shielding Angle:



LUMINANCE cd/(m2)		
G(180)	C0/180	C90/270
85	11528	58
80	5988	31
75	8717	24
70	6975	25
65	3120	44
60	1058	135
55	1346	1261
50	4751	6122
45	12098	14631

C Range: 0 - 360DEG
C Interval: 30.0DEG
Test Speed: HIGH
Temperature:25.3℃
Operators:zoe
Test Date:2024-12-10

γ Range: 0 - 180DEG
γ Interval: 1.0DEG
Test System:EVERFINE GO-SPEX500_V1 SYSTEM V2.00.461
Humidity:65.0%
Test Distance:3.160m [K=1.0000]
Remarks: LAMP:NF2W757GRT-V4 Ra:90
LENS:KY-XLZ148-36R
NOT DRIVER:48V
30minutes warm-up

CU AND LUMINAIRE BUDGETARY ESTIMATE DIAGRAM

Test:U:47.997V I:0.1780A P:8.5435W PF:1.0000 Freq:49.99Hz
Lamp Flux:913.52x1 lm

NAME: OZ48-KA-8

TYPE:

WEIGHT:

SPEC.: 3000K

DIM.:

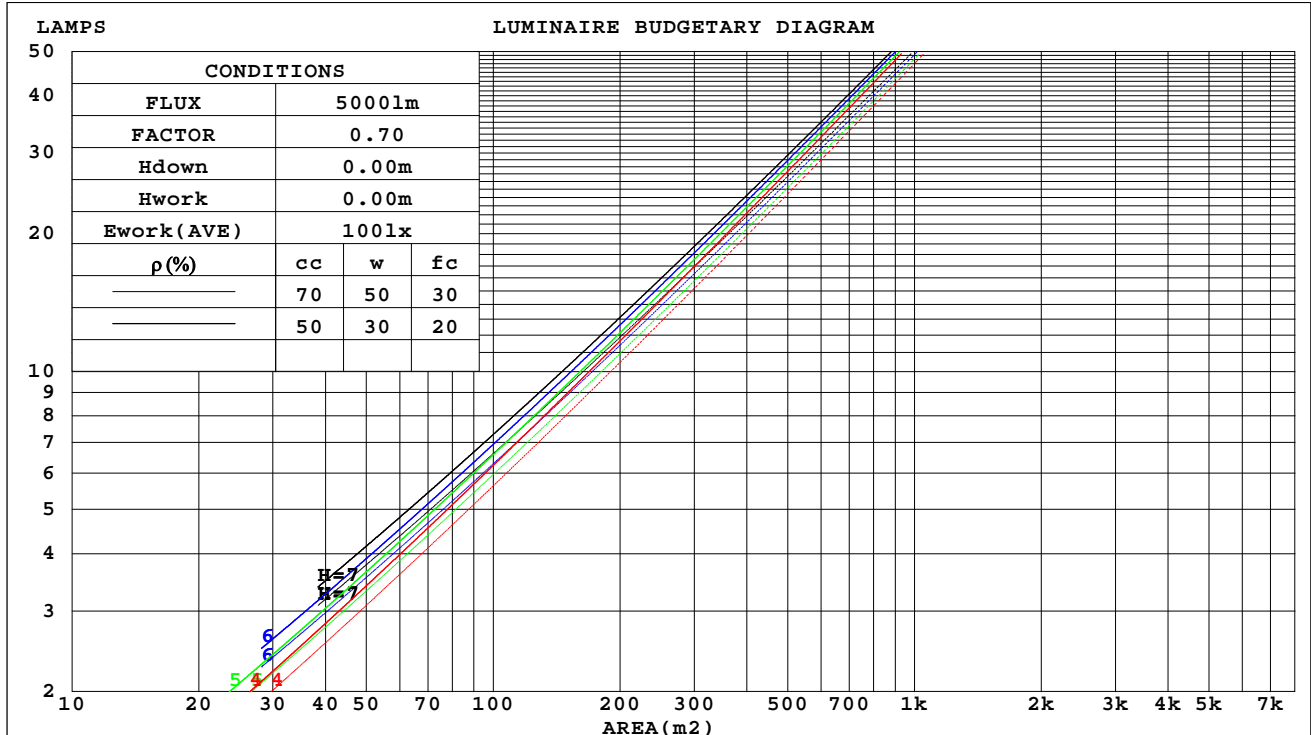
SERIAL No.: 2412101467

MFR.: RISE

SUR.: 0.001833m2

Shielding Angle:

ρ_{cc}	80%			70%			50%			30%			10%			0
ρ_w	50%	30%	10%	50%	30%	10%	50%	30%	10%	50%	30%	10%	50%	30%	10%	0
ρ_{fc}	20%			20%			20%			20%			20%			0
RCR	RCR:Room Cavity Ratio															



C Range: 0 - 360DEG
C Interval: 30.0DEG
Test Speed: HIGH
Temperature:25.3℃
Operators:zoe
Test Date:2024-12-10

γ Range: 0 - 180DEG
 γ Interval: 1.0DEG
Test System:EVERFINE GO-SPEX500_V1 SYSTEM V2.00.461
Humidity:65.0%
Test Distance:3.160m [K=1.0000]
Remarks: LAMP:NF2W757GRT-V4 Ra:90
LENS:KY-XLZ148-36R
NOT DRIVER:48V
30minutes warm-up

WEC AND CCEC

Test:U:47.997V I:0.1780A P:8.5435W PF:1.0000 Freq:49.99Hz Lamp Flux:913.52x1 lm		
NAME: OZ48-KA-8	TYPE:	WEIGHT:
SPEC.: 3000K	DIM.:	SERIAL No.: 2412101467
MFR.: RISE	SUR.: 0.001833m2	Shielding Angle:

pcc	80%			70%			50%			30%			10%			0
pw	50%	30%	10%	50%	30%	10%	50%	30%	10%	50%	30%	10%	50%	30%	10%	0
pfc	20%			20%			20%			20%			20%			0
RCR	RCR:Room Cavity Ratio						Wall Exitance Coefficients(WEC)									
0.0																
1.0	.084	.048	.015	.080	.046	.015	.074	.042	.014	.068	.039	.013	.062	.036	.012	
2.0	.079	.043	.013	.076	.042	.013	.071	.039	.012	.066	.037	.012	.061	.034	.011	
3.0	.075	.040	.012	.072	.039	.012	.067	.037	.011	.063	.035	.011	.059	.033	.010	
4.0	.071	.037	.011	.068	.036	.011	.065	.034	.010	.061	.033	.010	.057	.031	.009	
5.0	.067	.034	.010	.065	.033	.010	.062	.032	.009	.059	.031	.009	.056	.030	.009	
6.0	.064	.032	.009	.062	.031	.009	.059	.030	.009	.056	.029	.009	.054	.028	.008	
7.0	.061	.030	.009	.060	.030	.008	.057	.029	.008	.054	.028	.008	.052	.027	.008	
8.0	.058	.029	.008	.057	.028	.008	.055	.027	.008	.053	.027	.008	.051	.026	.008	
9.0	.056	.027	.008	.055	.027	.008	.053	.026	.007	.051	.025	.007	.049	.025	.007	
10.0	.054	.026	.007	.053	.025	.007	.051	.025	.007	.049	.024	.007	.047	.024	.007	

pcc	80%			70%			50%			30%			10%			0
pw	50%	30%	10%	50%	30%	10%	50%	30%	10%	50%	30%	10%	50%	30%	10%	0
pfc	20%			20%			20%			20%			20%			0
RCR	RCR:Room Cavity Ratio			Ceiling Cavity Exitance Coefficients(CCEC)												
0.0	.101	.101	.101	.086	.086	.086	.059	.059	.059	.034	.034	.034	.011	.011	.011	
1.0	.090	.084	.078	.077	.072	.067	.053	.049	.046	.030	.029	.027	.010	.009	.009	
2.0	.081	.070	.061	.070	.061	.053	.048	.042	.037	.028	.024	.022	.009	.008	.007	
3.0	.074	.060	.049	.063	.052	.043	.044	.036	.030	.025	.021	.018	.008	.007	.006	
4.0	.068	.052	.040	.058	.045	.035	.040	.031	.025	.023	.018	.015	.007	.006	.005	
5.0	.063	.046	.033	.054	.040	.029	.037	.028	.020	.022	.016	.012	.007	.005	.004	
6.0	.059	.041	.028	.050	.035	.024	.035	.025	.017	.020	.015	.010	.007	.005	.003	
7.0	.055	.037	.024	.047	.032	.021	.033	.022	.015	.019	.013	.009	.006	.004	.003	
8.0	.052	.033	.020	.045	.029	.018	.031	.020	.013	.018	.012	.007	.006	.004	.002	
9.0	.049	.030	.018	.042	.026	.015	.029	.018	.011	.017	.011	.007	.006	.004	.002	
10.0	.047	.028	.015	.040	.024	.014	.028	.017	.010	.016	.010	.006	.005	.003	.002	

C Range: 0 - 360DEG
C Interval: 30.0DEG
Test Speed: HIGH
Temperature:25.3℃
Operators:zoe
Test Date:2024-12-10

γ Range: 0 - 180DEG
γ Interval: 1.0DEG
Test System:EVERFINE GO-SPEX500_V1 SYSTEM V2.00.461
Humidity:65.0%
Test Distance:3.160m [K=1.0000]
Remarks: LAMP:NF2W757GRT-V4 Ra:90
LENS:KY-XLZ148-36R
NOT DRIVER:48V
30minutes warm-up

UGR(Unified Glare Rating) Table

Test:U:47.997V I:0.1780A P:8.5435W PF:1.0000 Freq:49.99Hz Lamp Flux:913.52x1 lm										
NAME: OZ48-KA-8					TYPE:			WEIGHT:		
SPEC.: 3000K					DIM.:			SERIAL No.: 2412101467		
MFR.: RISE					SUR.: 0.001833m2			Shielding Angle:		
ceiling/cavity	0.7	0.7	0.5	0.5	0.3	0.7	0.7	0.5	0.5	0.3
walls	0.5	0.3	0.5	0.3	0.3	0.5	0.3	0.5	0.3	0.3
working plane	0.2	0.2	0.2	0.2	0.2	0.2	0.2	0.2	0.2	0.2
Room dimensions	Viewed crosswise					Viewed endwise				
x = 2H y = 2H	15.6	16.4	15.8	16.6	16.7	16.2	17.0	16.5	17.2	17.4
3H	15.9	16.6	16.1	16.8	17.0	16.1	16.8	16.3	17.0	17.2
4H	16.5	17.2	16.7	17.4	17.6	16.0	16.7	16.3	16.9	17.1
6H	16.7	17.4	17.0	17.6	17.8	15.9	16.6	16.2	16.8	17.0
8H	16.8	17.4	17.1	17.7	18.0	15.9	16.5	16.2	16.7	17.0
12H	17.0	17.6	17.3	17.9	18.2	15.8	16.4	16.1	16.7	17.0
4H 2H	15.4	16.1	15.7	16.3	16.5	16.0	16.7	16.3	16.9	17.1
3H	15.8	16.5	16.2	16.7	17.0	15.8	16.4	16.1	16.7	17.0
4H	16.6	17.2	17.0	17.5	17.8	15.7	16.3	16.1	16.6	16.9
6H	17.0	17.5	17.4	17.8	18.2	15.6	16.1	16.0	16.5	16.8
8H	17.2	17.6	17.6	18.0	18.4	15.6	16.0	16.0	16.4	16.8
12H	17.5	17.9	17.9	18.3	18.7	15.5	16.0	15.9	16.3	16.7
8H 4H	16.6	17.1	17.0	17.4	17.8	15.7	16.2	16.1	16.5	16.9
6H	17.1	17.4	17.5	17.8	18.2	15.6	16.0	16.1	16.4	16.8
8H	17.3	17.7	17.8	18.1	18.5	15.6	15.9	16.0	16.3	16.8
12H	17.8	18.1	18.3	18.6	19.0	15.5	15.8	16.0	16.3	16.7
12H 4H	16.5	17.0	17.0	17.3	17.7	15.7	16.1	16.1	16.5	16.9
6H	17.0	17.4	17.5	17.8	18.2	15.6	16.0	16.1	16.4	16.8
8H	17.3	17.6	17.8	18.0	18.5	15.6	15.9	16.1	16.3	16.8
Variations with the observer position at spacings(CIE Pub.117):										
S = 1.0H	+ 1.5 / - 1.8					+ 3.2 / - 8.4				
1.5H	+ 3.2 / - 2.0					+ 5.3 / - 8.5				
2.0H	+ 1.9 / - 0.8					+ 6.1 / - 4.0				

CIE Pub.117, 913.5 lm Total Lamp Luminous Flux Correct (8log(F/F0) = -0.3)
Area: 0.001833 m2

C Range: 0 - 360DEG
C Interval: 30.0DEG
Test Speed: HIGH
Temperature:25.3℃
Operators:zoe
Test Date:2024-12-10

γ Range: 0 - 180DEG
γ Interval: 1.0DEG
Test System:EVERFINE GO-SPEX500_V1 SYSTEM V2.00.461
Humidity:65.0%
Test Distance:3.160m [K=1.0000]
Remarks: LAMP:NF2W757GRT-V4 Ra:90
LENS:KY-XLZ148-36R
NOT DRIVER:48V
30minutes warm-up

UTILIZATION FACTORS TABLE

Test:U:47.997V I:0.1780A P:8.5435W PF:1.0000 Freq:49.99Hz Lamp Flux:913.52x1 lm		
NAME: OZ48-KA-8	TYPE:	WEIGHT:
SPEC.: 3000K	DIM.:	SERIAL No.: 2412101467
MFR.: RISE	SUR.: 0.001833m2	Shielding Angle:

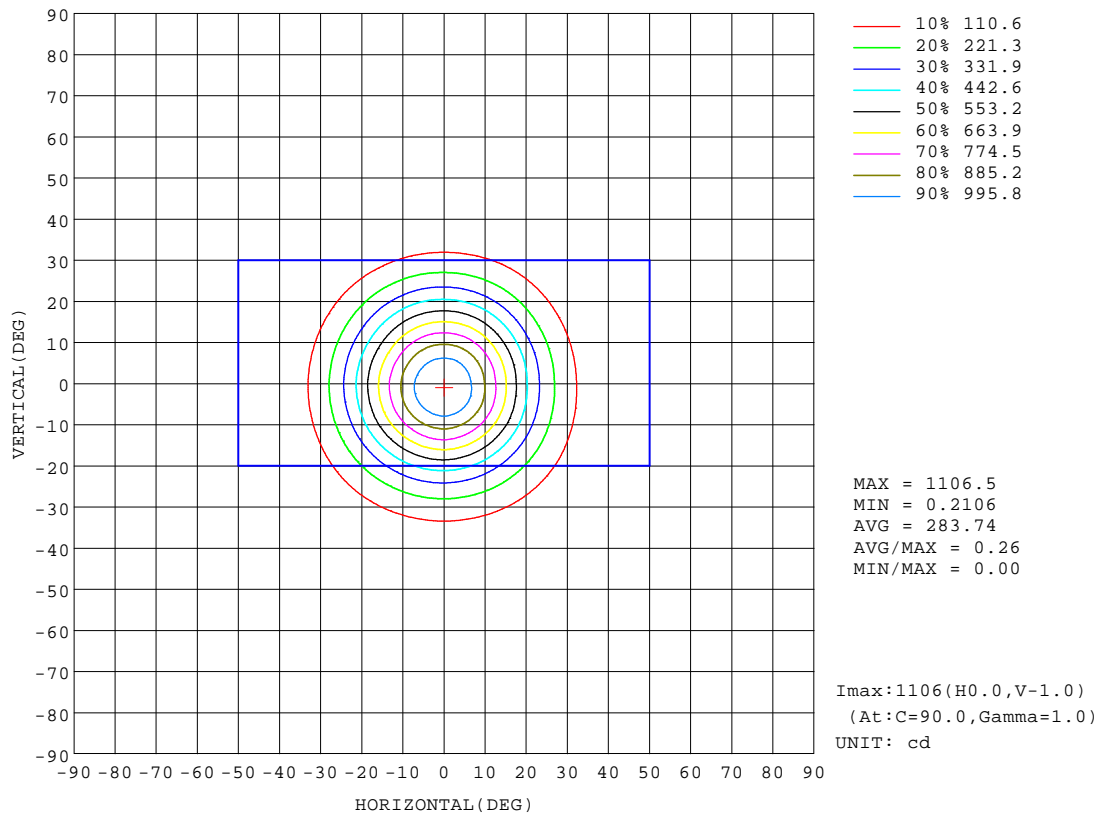
REFLECTANCE										
Ceiling	0.8	0.8	0.8	0.7	0.7	0.7	0.5	0.5	0.5	0
Walls	0.7	0.5	0.3	0.7	0.5	0.3	0.7	0.5	0.3	0
Working plane	0.2	0.2	0.2	0.2	0.2	0.2	0.2	0.2	0.2	0
ROOM INDEX	UTILIZATION FACTORS(PERCENT) $k(RI) \times RCR = 5$									
k = 0.60	48	44	43	47	44	42	47	44	42	41
0.80	51	48	47	51	48	47	50	48	46	45
1.00	53	51	49	53	50	49	52	50	48	47
1.25	55	53	51	55	53	51	54	52	51	48
1.50	57	54	53	56	54	53	55	53	52	50
2.00	58	56	54	57	55	54	56	54	53	50
2.50	59	57	55	58	56	55	56	55	54	51
3.00	60	58	57	59	57	56	57	56	55	51
4.00	61	59	58	60	58	57	58	57	56	52
5.00	61	60	59	60	59	58	58	57	57	53
ROOM INDEX	UF(total)									Direct
According to DIN EN 13032-2 2004			Suspended					SHRNOM = 1.25		

C Range: 0 - 360DEG
C Interval: 30.0DEG
Test Speed: HIGH
Temperature:25.3℃
Operators:zoe
Test Date:2024-12-10

γ Range: 0 - 180DEG
γ Interval: 1.0DEG
Test System:EVERFINE GO-SPEX500_V1 SYSTEM V2.00.461
Humidity:65.0%
Test Distance:3.160m [K=1.0000]
Remarks: LAMP:NF2W757GRT-V4 Ra:90
LENS:KY-XLZ148-36R
NOT DRIVER:48V
30minutes warm-up

ISOCANDELA DIAGRAM

Test:U:47.997V I:0.1780A P:8.5435W PF:1.0000 Freq:49.99Hz Lamp Flux:913.52x1 lm		
NAME: OZ48-KA-8	TYPE:	WEIGHT:
SPEC.: 3000K	DIM.:	SERIAL No.: 2412101467
MFR.: RISE	SUR.: 0.001833m2	Shielding Angle:

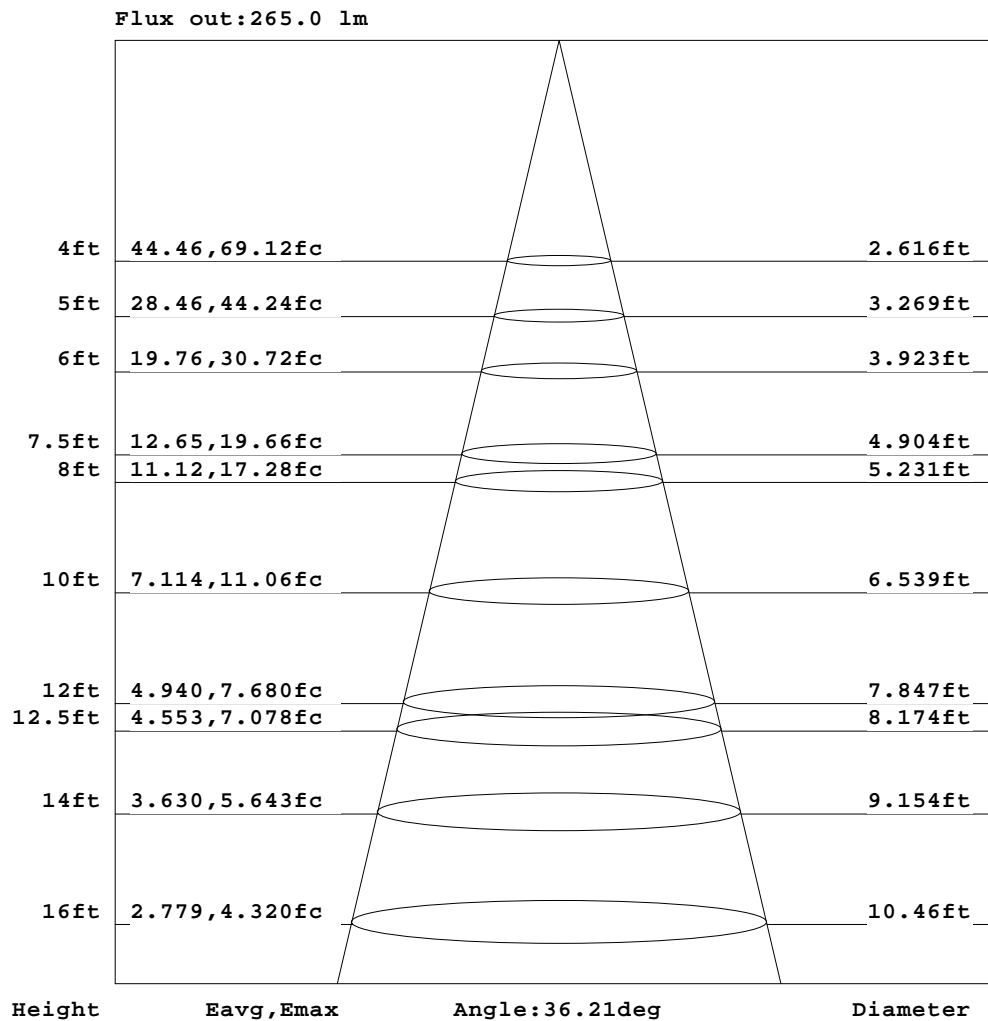


C Range: 0 - 360DEG
C Interval: 30.0DEG
Test Speed: HIGH
Temperature:25.3℃
Operators:zoe
Test Date:2024-12-10

γ Range: 0 - 180DEG
γ Interval: 1.0DEG
Test System:EVERFINE GO-SPEX500_V1 SYSTEM V2.00.461
Humidity:65.0%
Test Distance:3.160m [K=1.0000]
Remarks: LAMP:NF2W757GRT-V4 Ra:90
LENS:KY-XLZ148-36R
NOT DRIVER:48V
30minutes warm-up

AAI Figure

Test:U:47.997V I:0.1780A P:8.5435W PF:1.0000 Freq:49.99Hz Lamp Flux:913.52x1 lm		
NAME: OZ48-KA-8	TYPE:	WEIGHT:
SPEC.: 3000K	DIM.:	SERIAL No.: 2412101467
MFR.: RISE	SUR.: 0.001833m2	Shielding Angle:



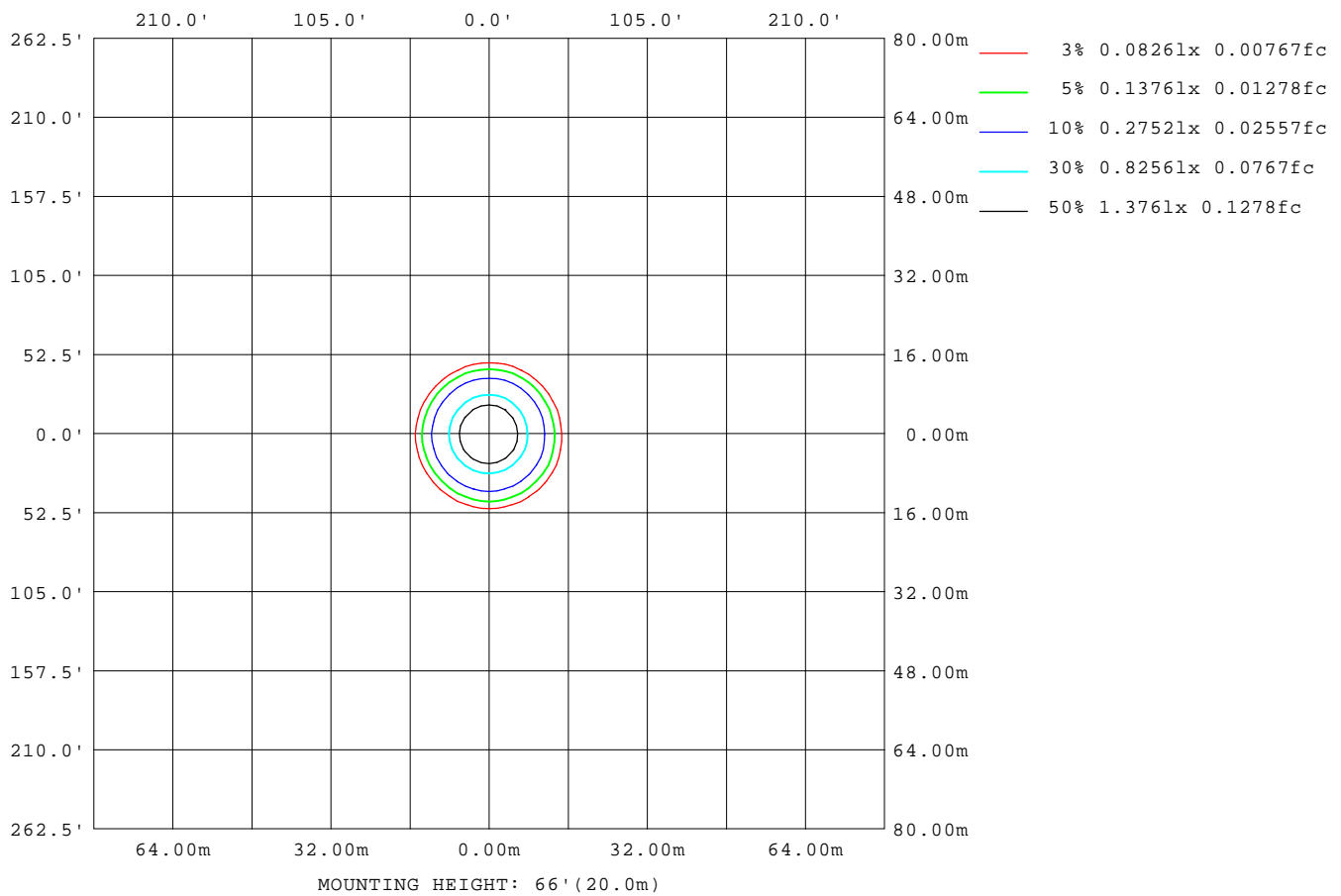
Note:The Curves indicate the illuminated area and the average illumination when the luminaire is at different distance.

C Range: 0 - 360DEG
C Interval: 30.0DEG
Test Speed: HIGH
Temperature:25.3℃
Operators:zoe
Test Date:2024-12-10

γ Range: 0 - 180DEG
γ Interval: 1.0DEG
Test System:EVERFINE GO-SPEX500_V1 SYSTEM V2.00.461
Humidity:65.0%
Test Distance:3.160m [K=1.0000]
Remarks: LAMP:NF2W757GRT-V4 Ra:90
LENS:KY-XLZ148-36R
NOT DRIVER:48V
30minutes warm-up

ISOLUX DIAGRAM

Test:U:47.997V I:0.1780A P:8.5435W PF:1.0000 Freq:49.99Hz Lamp Flux:913.52x1 lm		
NAME: OZ48-KA-8	TYPE:	WEIGHT:
SPEC.: 3000K	DIM.:	SERIAL No.: 2412101467
MFR.: RISE	SUR.: 0.001833m2	Shielding Angle:



C Range: 0 - 360DEG
C Interval: 30.0DEG
Test Speed: HIGH
Temperature:25.3℃
Operators:zoe
Test Date:2024-12-10

γ Range: 0 - 180DEG
γ Interval: 1.0DEG
Test System:EVERFINE GO-SPEX500_V1 SYSTEM V2.00.461
Humidity:65.0%
Test Distance:3.160m [K=1.0000]
Remarks: LAMP:NF2W757GRT-V4 Ra:90
LENS:KY-XLZ148-36R
NOT DRIVER:48V
30minutes warm-up

LED Avg.L Report

Test:U:47.997V I:0.1780A P:8.5435W PF:1.0000 Freq:49.99Hz Lamp Flux:913.52x1 lm		
NAME: OZ48-KA-8	TYPE:	WEIGHT:
SPEC.: 3000K	DIM.:	SERIAL No.: 2412101467
MFR.: RISE	SUR.: 0.001833m2	Shielding Angle:

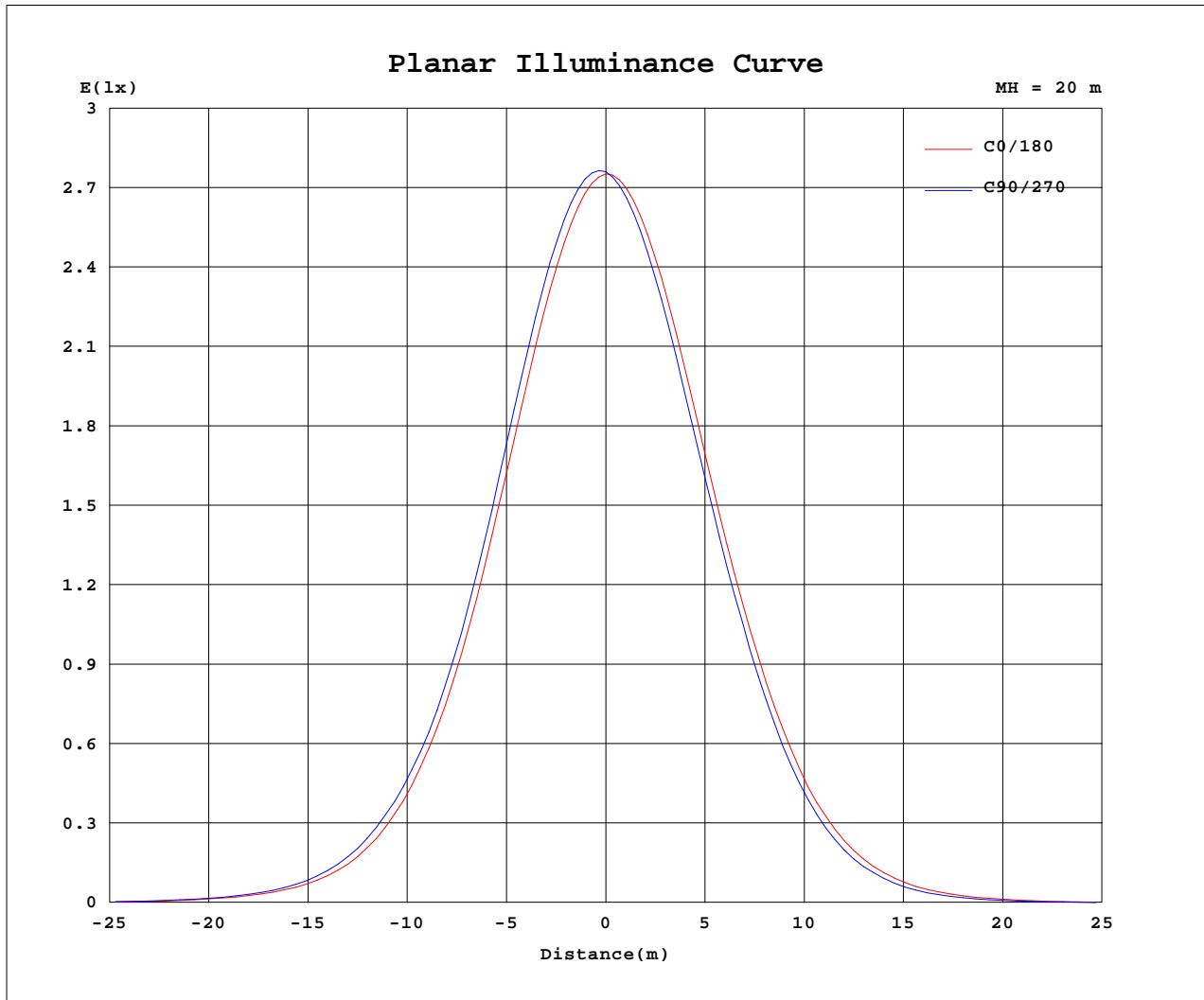
AvgL	cd/m2
L_0~180(65)av	1579
L_0~180(75)av	4390
L_0~180(85)av	5846
L_90~270(65)av	34
L_90~270(75)av	26
L_90~270(85)av	59
L_45(65)av	570
L_45(75)av	1924
L_45(85)av	2702

Standard: GB/T 29293-2012

C Range: 0 - 360DEG
C Interval: 30.0DEG
Test Speed: HIGH
Temperature:25.3℃
Operators:zoe
Test Date:2024-12-10

γ Range: 0 - 180DEG
γ Interval: 1.0DEG
Test System:EVERFINE GO-SPEX500_V1 SYSTEM V2.00.461
Humidity:65.0%
Test Distance:3.160m [K=1.0000]
Remarks: LAMP:NF2W757GRT-V4 Ra:90
LENS:KY-XLZ148-36R
NOT DRIVER:48V
30minutes warm-up

Planar Illuminance Curve



C Range: 0 - 360DEG
 C Interval: 30.0DEG
 Test Speed: HIGH
 Temperature: 25.3 °C
 Operators: zoe
 Test Date: 2024-12-10

γ Range: 0 - 180DEG
 γ Interval: 1.0DEG
 Test System: EVERFINE GO-SPEX500_V1 SYSTEM V2.00.461
 Humidity: 65.0%
 Test Distance: 3.160m [K=1.0000]
 Remarks: LAMP: NF2W757GRT-V4 Ra: 90
 LENS: KY-XLZ148-36R
 NOT DRIVER: 48V
 30minutes warm-up



LUMINOUS DISTRIBUTION INTENSITY DATA

Test:U:47.997V I:0.1780A P:8.5435W PF:1.0000 Freq:49.99Hz Lamp Flux:913.52x1 lm		
NAME: OZ48-KA-8	TYPE:	WEIGHT:
SPEC.: 3000K	DIM.:	SERIAL No.: 2412101467
MFR.: RISE	SUR.: 0.001833m2	Shielding Angle:

Table--1

UNIT: cd

C(DEG) γ (DEG)	0	30	60	90	120	150	180	210	240	270	300	330						
0	1103	1103	1103	1103	1103	1103	1103	1103	1103	1103	1103	1103						
5	1039	1055	1063	1068	1064	1059	1052	1038	1030	1026	1029	1031						
10	883	906	918	926	920	914	905	884	873	866	869	873						
15	671	692	703	714	711	711	703	680	670	663	665	664						
20	453	471	480	490	492	497	497	475	467	459	458	451						
25	276	292	301	306	308	311	313	294	285	279	276	271						
30	150	165	173	176	174	173	171	157	149	147	147	144						
35	74.6	84.0	88.1	88.2	86.7	83.9	82.9	72.7	65.9	66.6	67.8	68.9						
40	35.3	40.5	41.5	41.3	39.7	37.0	35.7	29.8	25.2	26.5	28.3	30.7						
45	15.7	18.8	18.9	18.9	17.6	15.3	14.3	10.9	8.64	9.71	10.7	12.9						
50	5.61	7.03	7.22	7.21	6.44	5.11	4.51	2.82	2.13	2.33	2.93	4.10						
55	1.42	1.56	1.44	1.32	1.10	0.87	0.68	0.33	0.21	0.24	0.49	0.98						
60	0.97	0.81	0.35	0.12	0.11	0.10	0.07	0.06	0.05	0.05	0.33	0.76						
65	2.42	1.88	0.29	0.03	0.03	0.03	0.02	0.02	0.02	0.02	0.34	1.08						
70	4.38	2.90	0.32	0.02	0.02	0.02	0.02	0.02	0.02	0.01	0.40	2.75						
75	4.14	3.35	0.32	0.01	0.01	0.01	0.02	0.02	0.01	0.01	0.43	3.26						
80	1.91	1.60	0.32	0.01	0.01	0.01	0.02	0.01	0.01	0.01	0.43	1.48						
85	1.85	1.28	0.33	0.01	0.01	0.01	0.02	0.01	0.01	0.01	0.42	1.42						
90	0.00	0.00	0.00	0.00	0.00	0.00	0.00	0.00	0.00	0.00	0.00	0.00						
95	0.00	0.00	0.00	0.00	0.00	0.00	0.00	0.00	0.00	0.00	0.00	0.00						
100	0.00	0.00	0.00	0.00	0.00	0.00	0.00	0.00	0.00	0.00	0.00	0.00						
105	0.00	0.00	0.00	0.00	0.00	0.00	0.00	0.00	0.00	0.00	0.00	0.00						
110	0.00	0.00	0.00	0.00	0.00	0.00	0.00	0.00	0.00	0.00	0.00	0.00						
115	0.00	0.00	0.00	0.00	0.00	0.00	0.00	0.00	0.00	0.00	0.00	0.00						
120	0.00	0.00	0.00	0.00	0.00	0.00	0.00	0.00	0.00	0.00	0.00	0.00						
125	0.00	0.00	0.00	0.00	0.00	0.00	0.00	0.00	0.00	0.00	0.00	0.00						
130	0.00	0.00	0.00	0.00	0.00	0.00	0.00	0.00	0.00	0.00	0.00	0.00						
135	0.00	0.00	0.00	0.00	0.00	0.00	0.00	0.00	0.00	0.00	0.00	0.00						
140	0.00	0.00	0.00	0.00	0.00	0.00	0.00	0.00	0.00	0.00	0.00	0.00						
145	0.00	0.00	0.00	0.00	0.00	0.00	0.00	0.00	0.00	0.00	0.00	0.00						
150	0.00	0.00	0.00	0.00	0.00	0.00	0.00	0.00	0.00	0.00	0.00	0.00						
155	0.00	0.00	0.00	0.00	0.00	0.00	0.00	0.00	0.00	0.00	0.00	0.00						
160	0.00	0.00	0.00	0.00	0.00	0.00	0.00	0.00	0.00	0.00	0.00	0.00						
165	0.00	0.00	0.00	0.00	0.00	0.00	0.00	0.00	0.00	0.00	0.00	0.00						
170	0.00	0.00	0.00	0.00	0.00	0.00	0.00	0.00	0.00	0.00	0.00	0.00						
175	0.00	0.00	0.00	0.00	0.00	0.00	0.00	0.00	0.00	0.00	0.00	0.00						
180	0.00	0.00	0.00	0.00	0.00	0.00	0.00	0.00	0.00	0.00	0.00	0.00						

C Range: 0 - 360DEG
C Interval: 30.0DEG
Test Speed: HIGH
Temperature:25.3℃
Operators:zoe
Test Date:2024-12-10

γ Range: 0 - 180DEG
γ Interval: 1.0DEG
Test System:EVERFINE GO-SPEX500_V1 SYSTEM V2.00.461
Humidity:65.0%
Test Distance:3.160m [K=1.0000]
Remarks: LAMP:NF2W757GRT-V4 Ra:90
LENS:KY-XLZ148-36R
NOT DRIVER:48V
30minutes warm-up